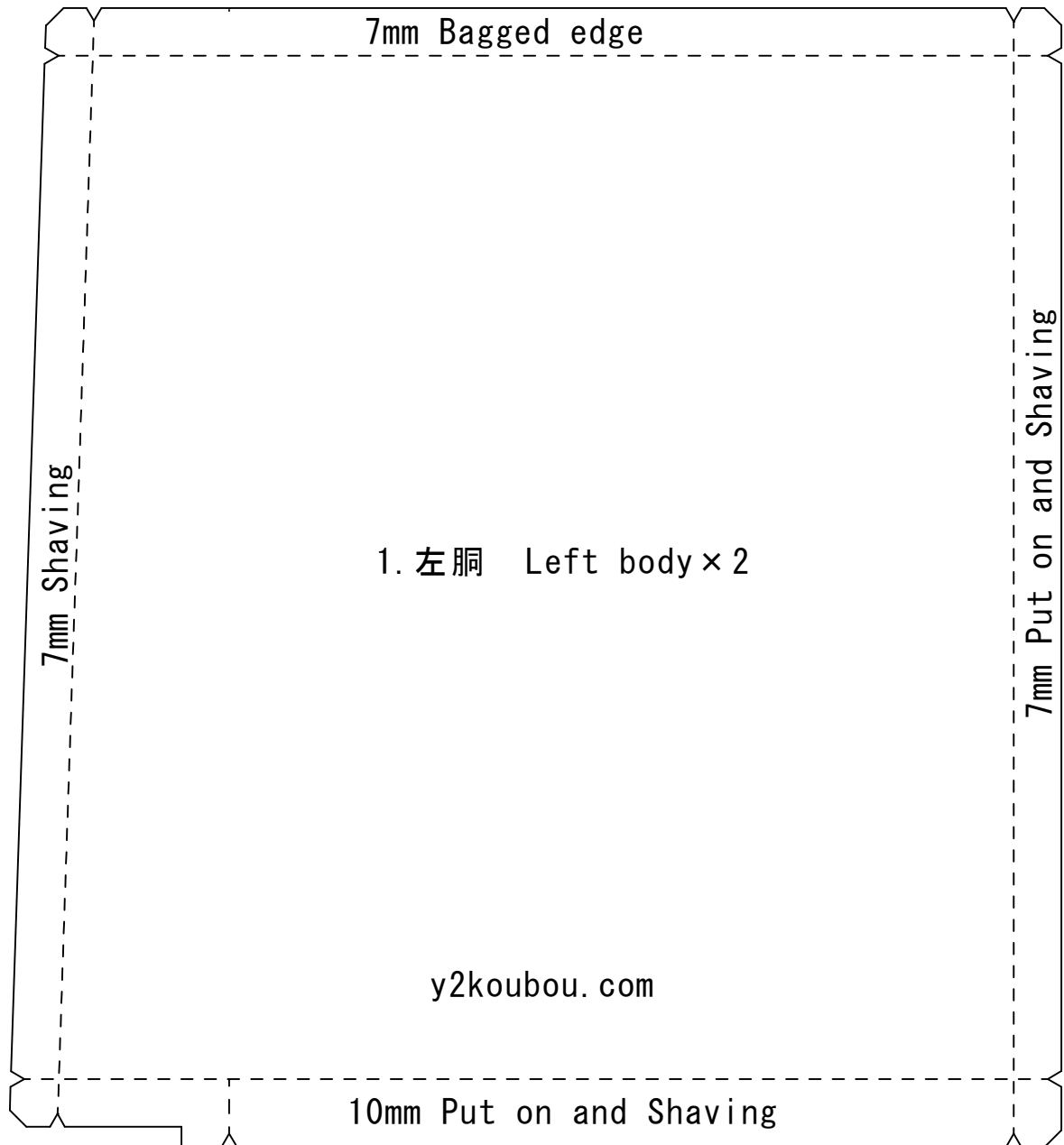


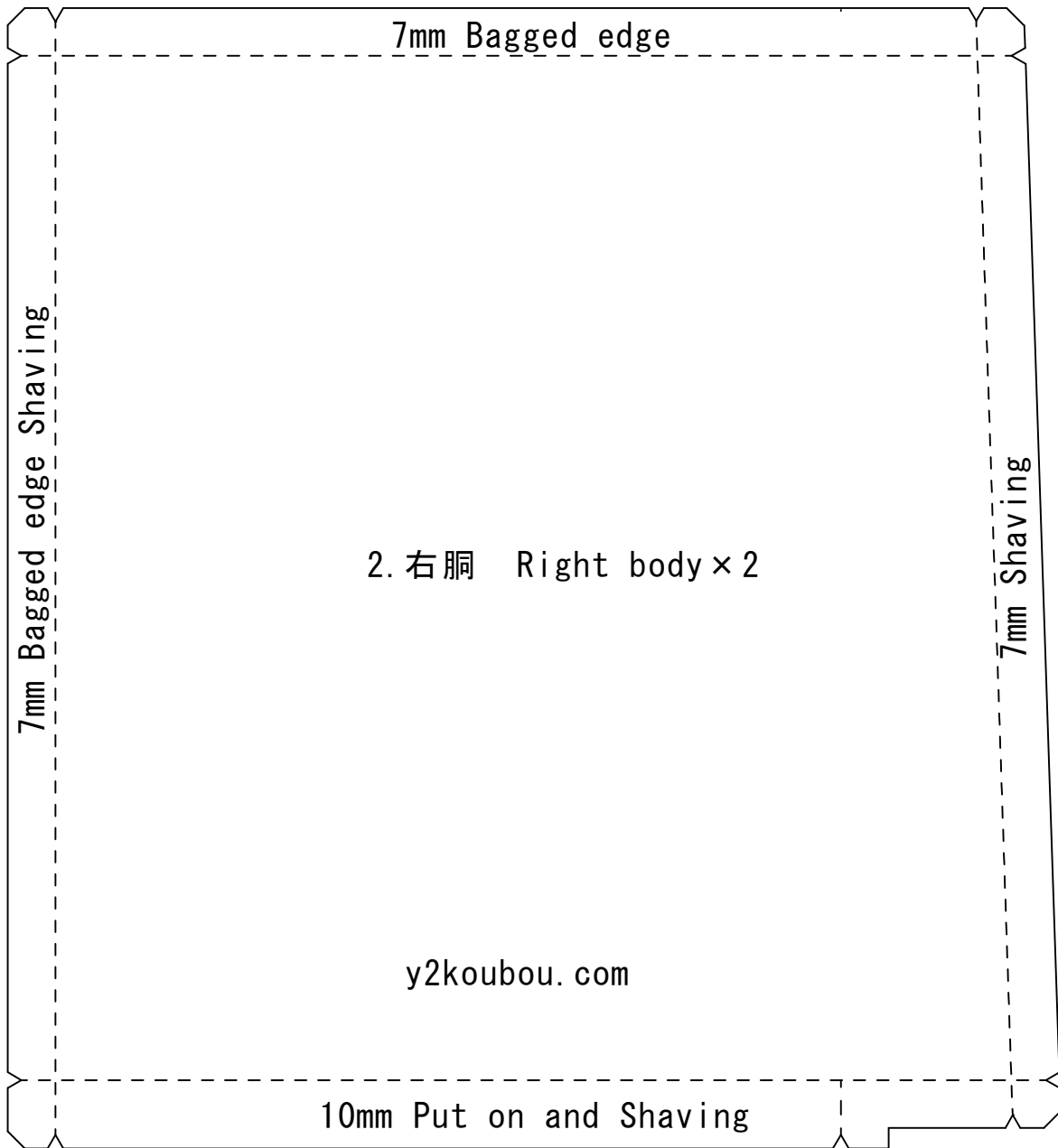
ダウンロードありがとうございます

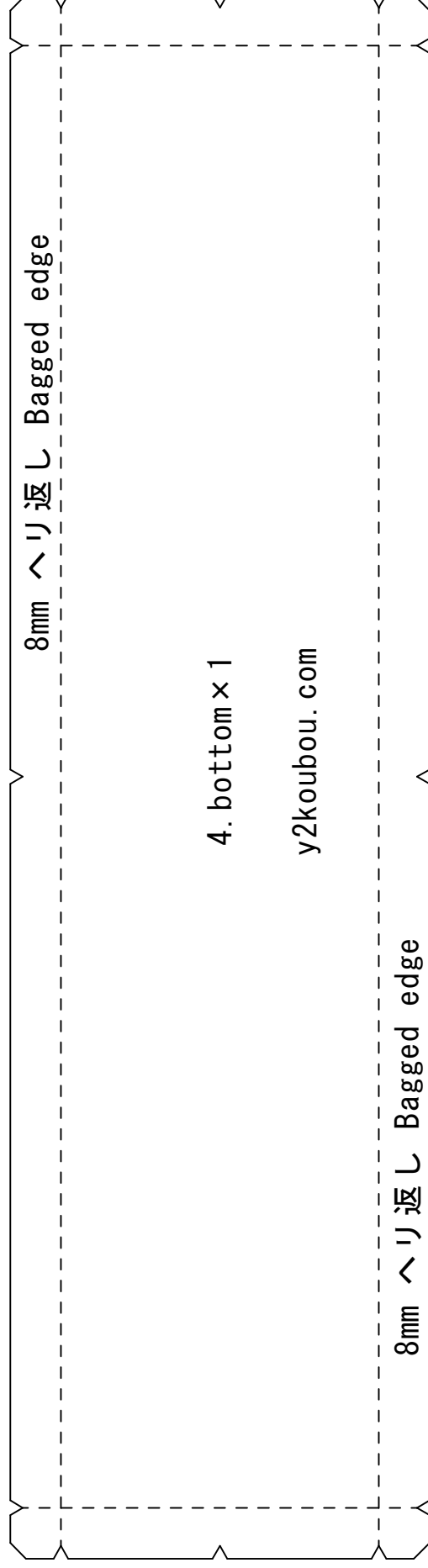
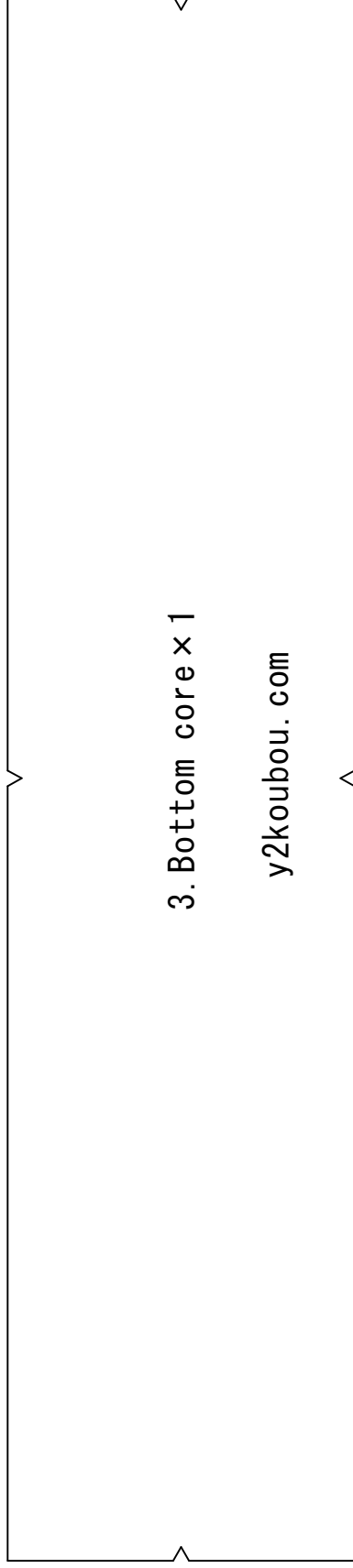
Thank you for downloading

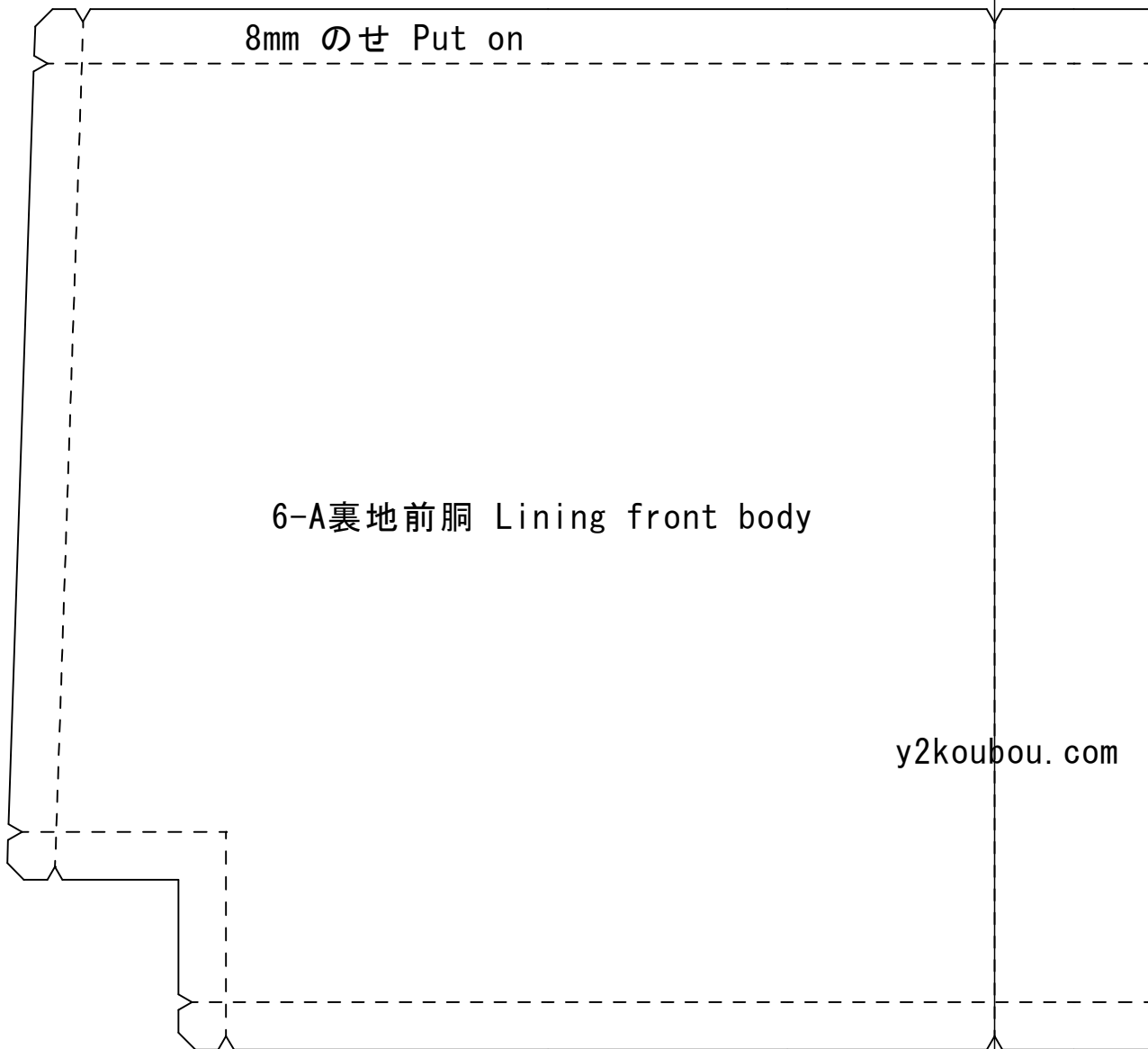
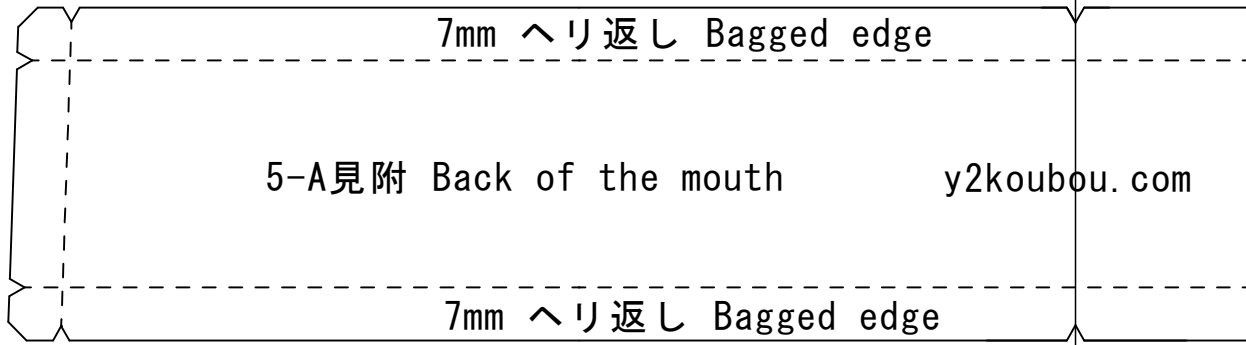
厚紙に貼ってお使いください

Please use it by sticking it on thick paper









2koubou.com

5-B見附 Back of the mouth  
× 2

7mm stitch

y2koubou.com

6-B裏地前胴 Lining front body × 1

7mm stitch

7mm stitch

7mm stitch

8-A額芯 amount core

y2koubou.com

8mm のせ Put on

3 places 7mm へり返し Bagged edge

7-A裏地背胴 Lining back body

y2koubou.com

y2koubou.com

8-B額芯 amount core

Bagged edge

8mm のせ Put on

7mm stitch

7-B裏地背胴 Lining back body × 1

7mm stitch

7mm stitch

y2koubou.com

7mm へり返し Bagged edge

9. 裏地 lining zipper pocket×1

折り位置 Fold position

y2koubou.com



10見附芯 Back of the mouth core x 2

y2koubou.com

11胴芯 body core x 2

y2koubou.com

12. カン付け芯 looped belt core  
y2koubou.com

7mm へり返し Bagged edge

13. カン付け looped belt Cut in half  
y2koubou.com

7mm へり返し Bagged edge

## Notes

By accumulating subtle deviations such as the thickness of leather and the core material or the thickness of the core material  
The sewing dimensions may not match  
and you may not be able to make it neatly.

## 注意事項

革の厚みや、芯材又は芯材の厚みなど、微妙なズレの積み重ねで、縫製寸法が合わなくなり、綺麗に作れなくなる場合があります。

Pattern	
1	左胴 Left body × 2
2	右胴 Right body × 2
3	底芯 Bottom core × 1
4	底 bottom × 1
5	A. B 見附 Back of the mouth × 2
6	A. B 裏地前胴 Lining front body × 2
7	A. B 裏地背胴 Lining back body × 1
8	A. B 額芯 amount core × 1
9	裏地 lining zipper pocket × 1
10	見附芯 Back of the mouth core × 2
11	胴芯 body core × 2
12	チチ芯 looped belt core
13	チチ looped belt Cut in half
制作者	Y2工房 (y2koubou)