

【No21】 Make shoulder bag of oil leather and 14 oz denim

	English	日本語
1	Front body (top)*1	前胴上ハギ*1
2	Zipper stop*2	ジッパー止め*2
3	Front body (under)*1	前胴下ハギ
4	Back torso	背胴*1
5	Back of the mouth*2	見附*2
6	lining body*2	裏地胴*2
7	Depth*2	マチ*2
8	Left During Depth*4	左中マチ*4
9	Right During Depth*4	右中マチ*4
10	Lining side pocket*2	裏地あおりポケット*2
11	Lining Front torso zipper pocket	裏地前胴ジッパーポケット*1
12	body core*2	胴芯*2
13	lining Mouth core*4	裏地口芯*4
14	Depth core*2	マチ芯*2
15	During Depth core*2	中マチ芯*2
16	Back of the mouth core*2	見付芯*2
17	lining pocket*2	裏地ポケット*2
18	looped belt	カン付け (チチ)
19	looped belt core	カン付け芯 (チチ芯)
20	Front body pocket mouth core*1	前胴ポケット口芯*1
21		
22		
23		
制作者	Y2工房 (y2koubou)	
HP	y2koubou.com	
You Tube	Y2工房 -Bag craftsman-	

ダウンロードありがとうございます

厚紙などに貼ってお使いください

■注意事項

革の厚みや、芯材又は、芯材の厚みなど、微妙なズレの積み重ねで縫製寸法が合わなくなり、綺麗に作れなくなる場合があります。

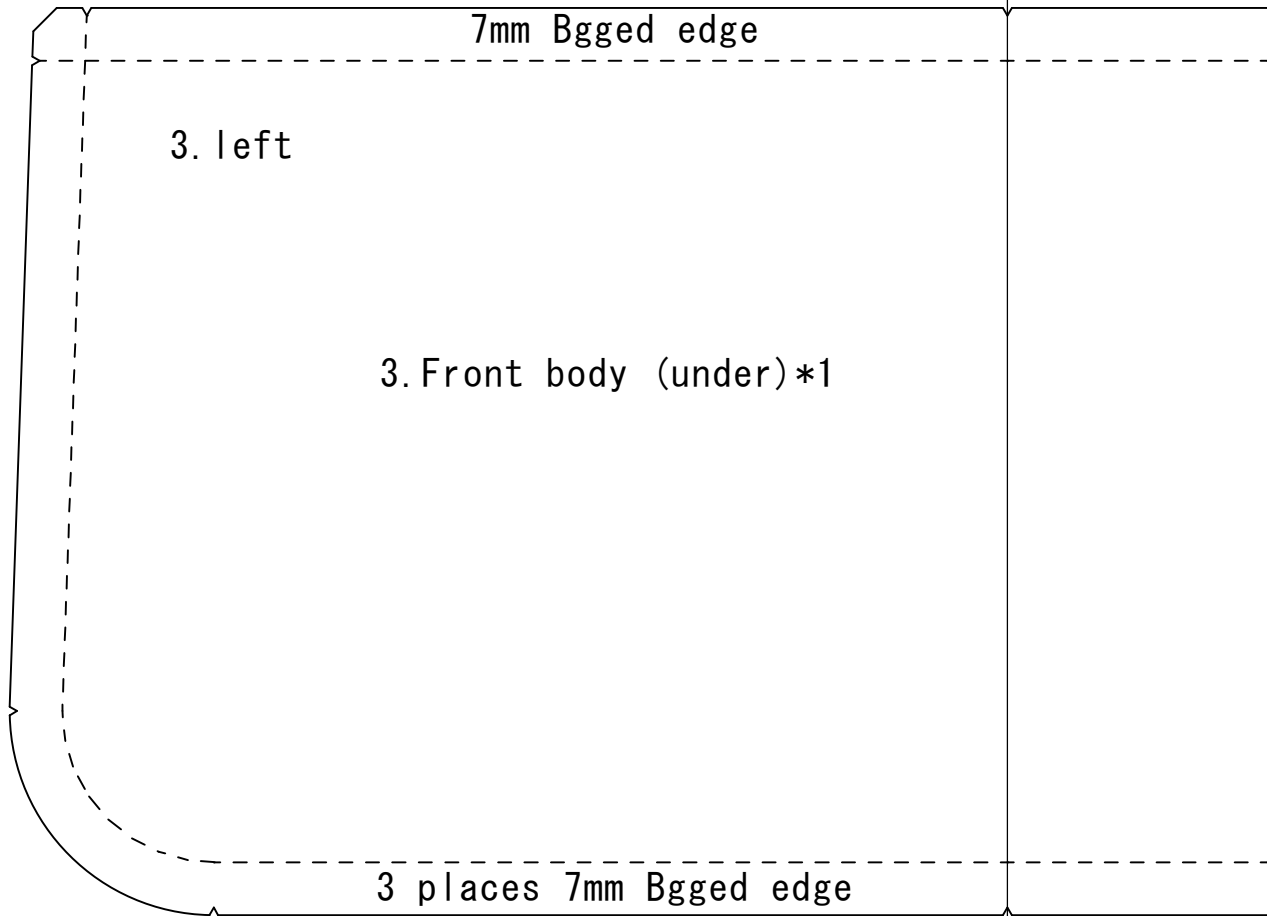
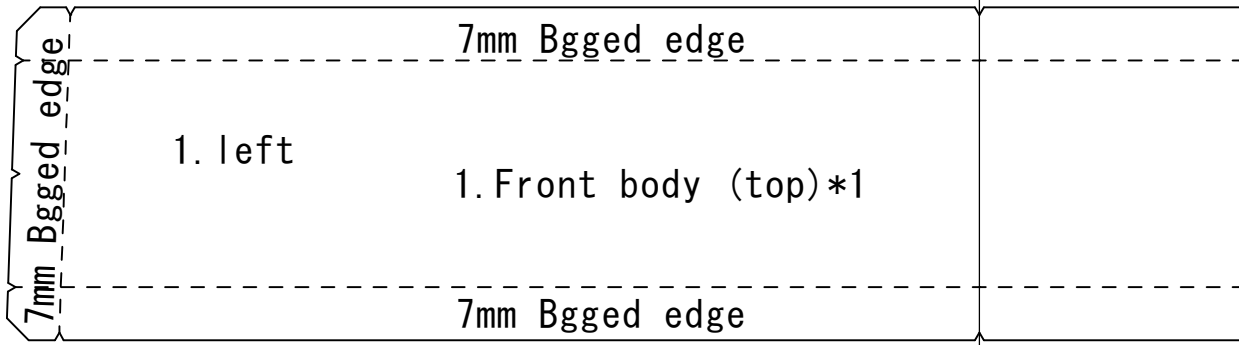
Thank you for downloading

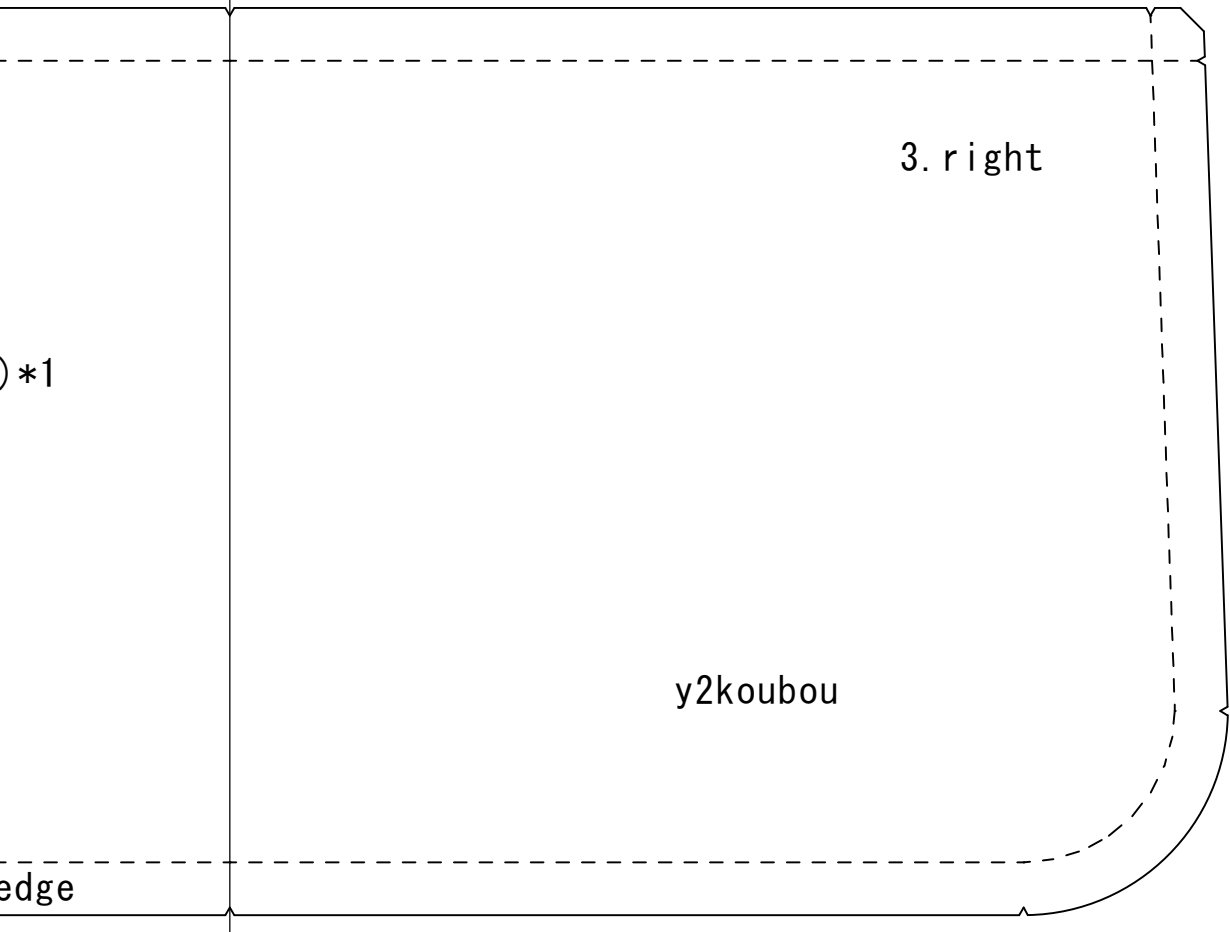
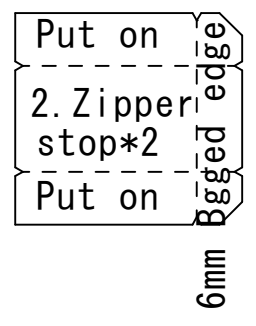
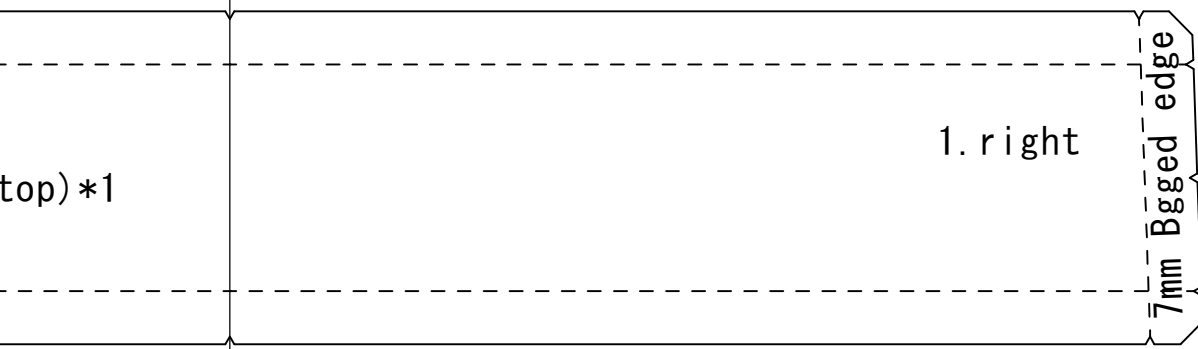
Please use it by sticking it on thick paper

■Notes

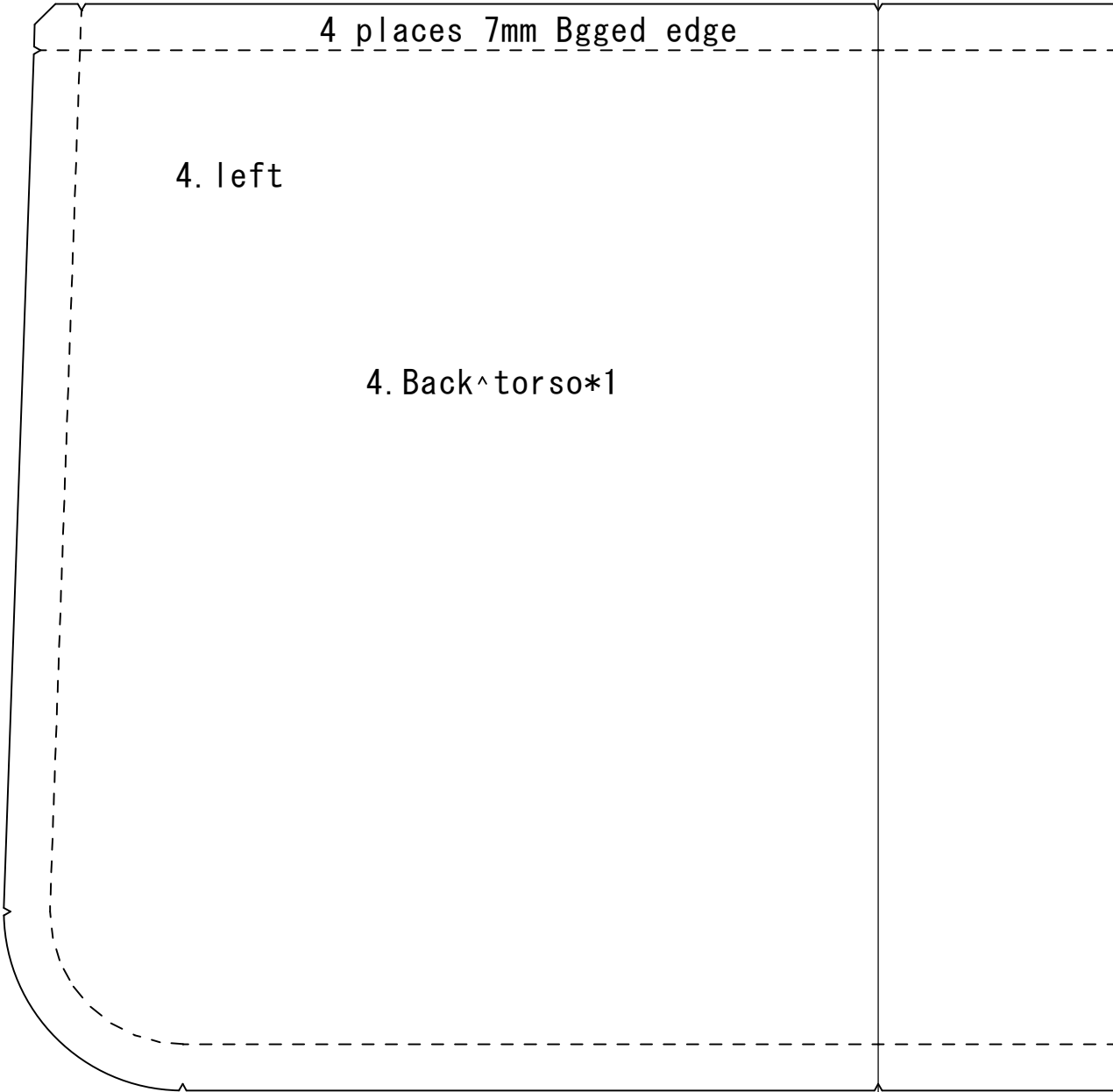
By accumulating subtle deviations such as the thickness of leather and the core material or the thickness of the core material  
The sewing dimensions may not match  
and you may not be able to make it neatly.

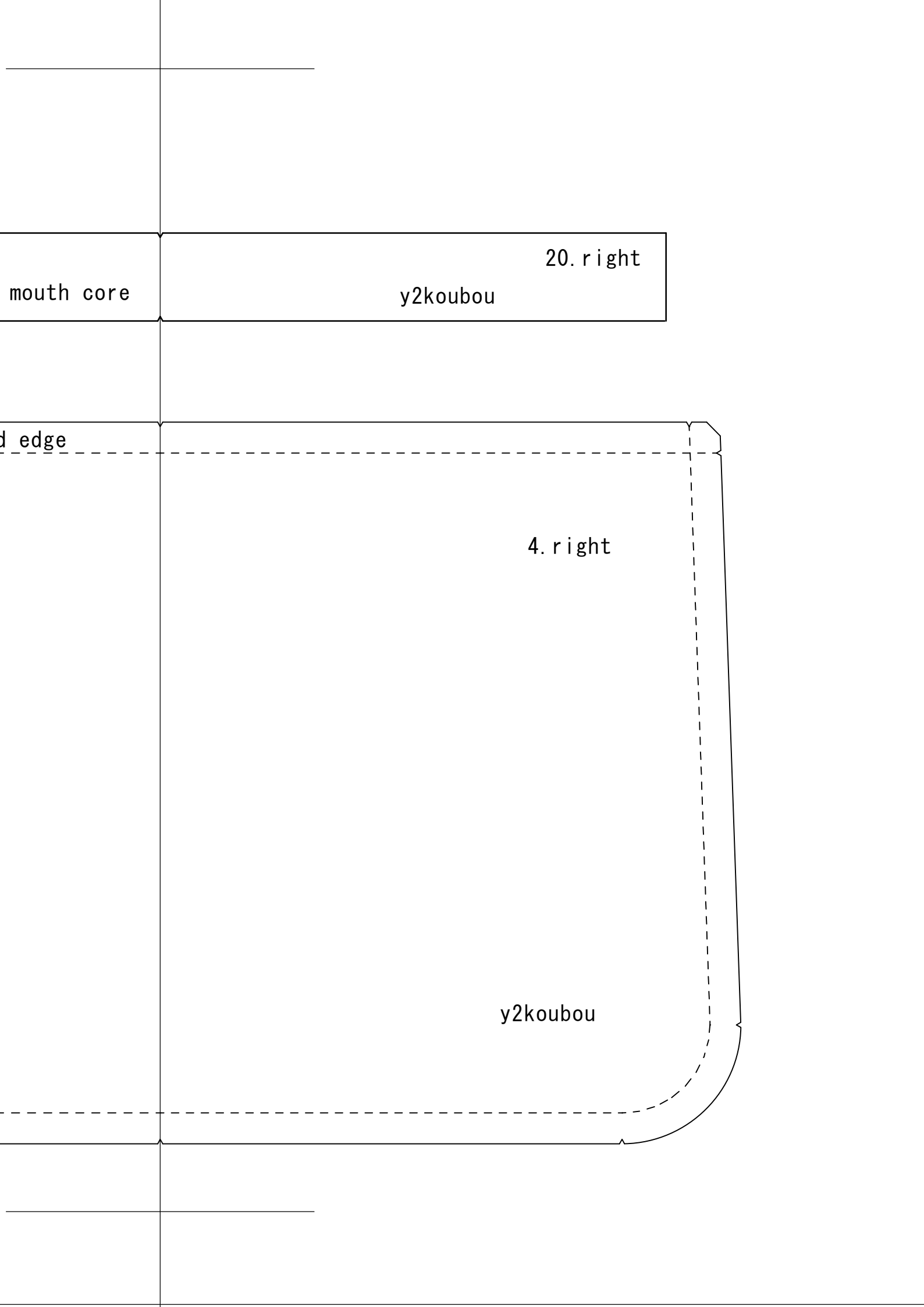
English	日本語
Bgged edge	へり返し
Put on	のせ
stitch	縫い





20. left  
20. Front body pocket mouth core





mouth core

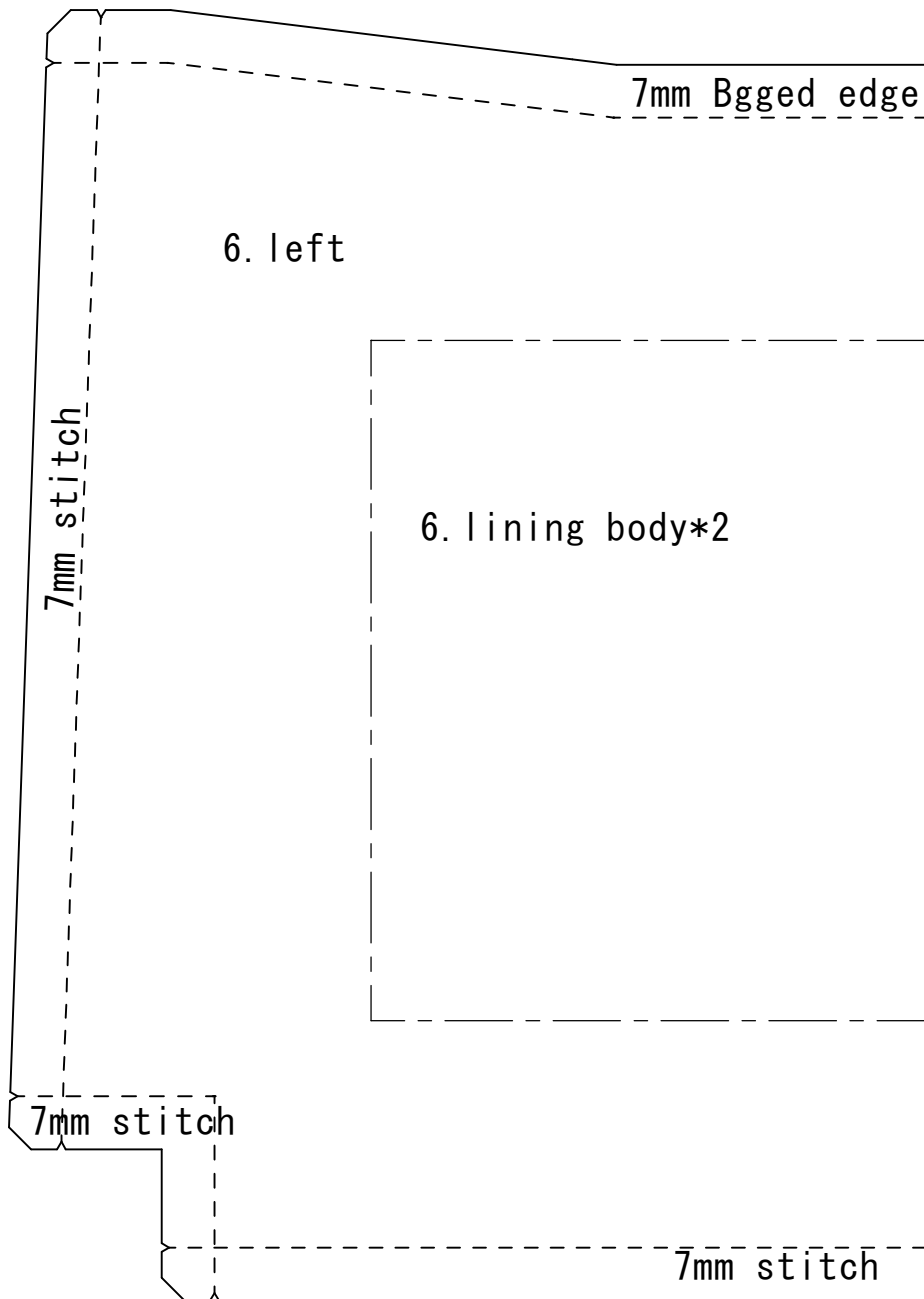
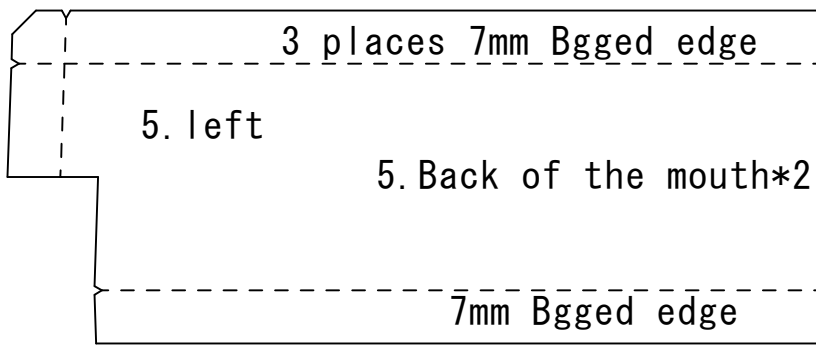
y2koubou

20. right

d edge

4. right

y2koubou



edge

outh\*2

ge

5. right

edge

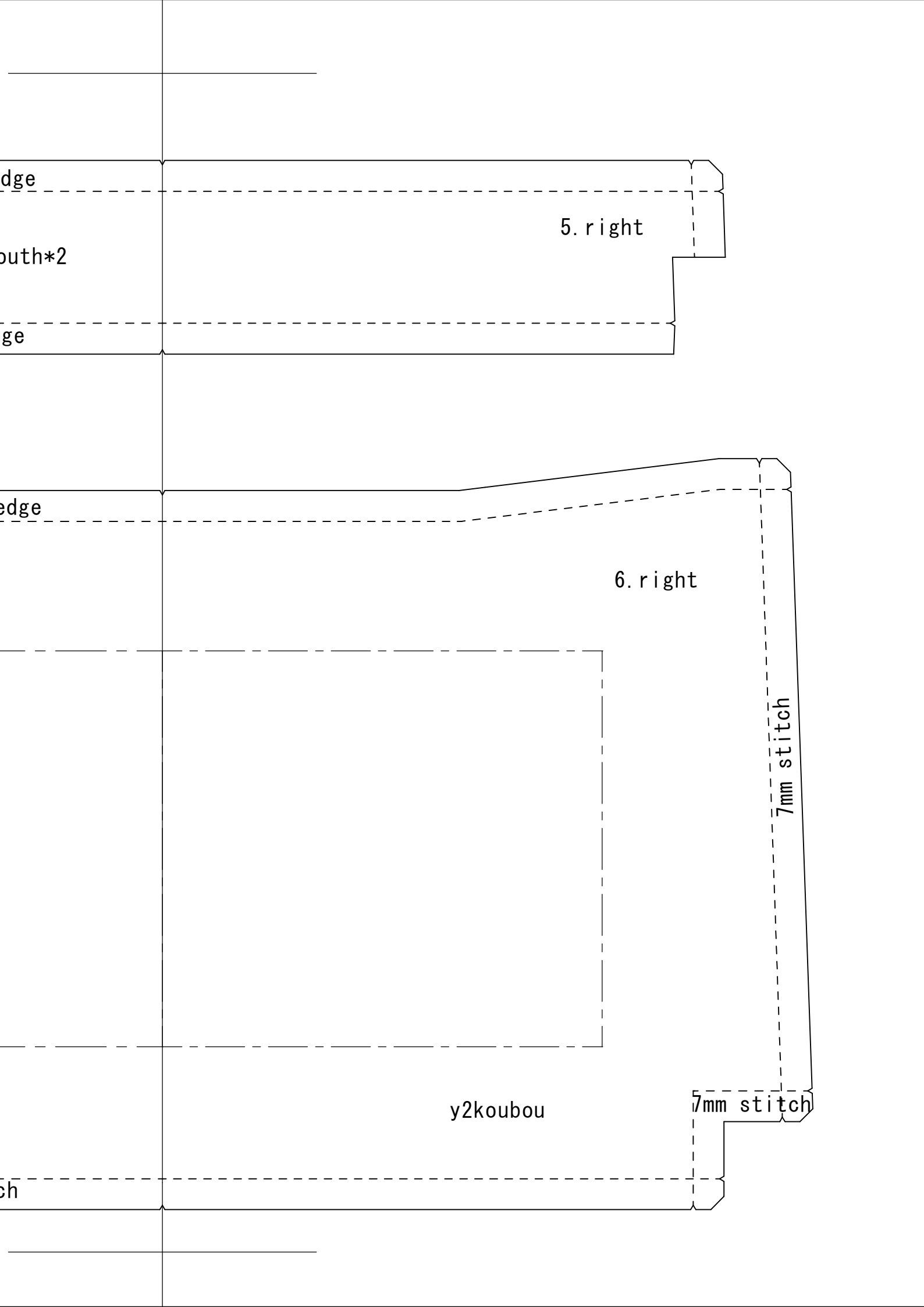
6. right

7mm stitch

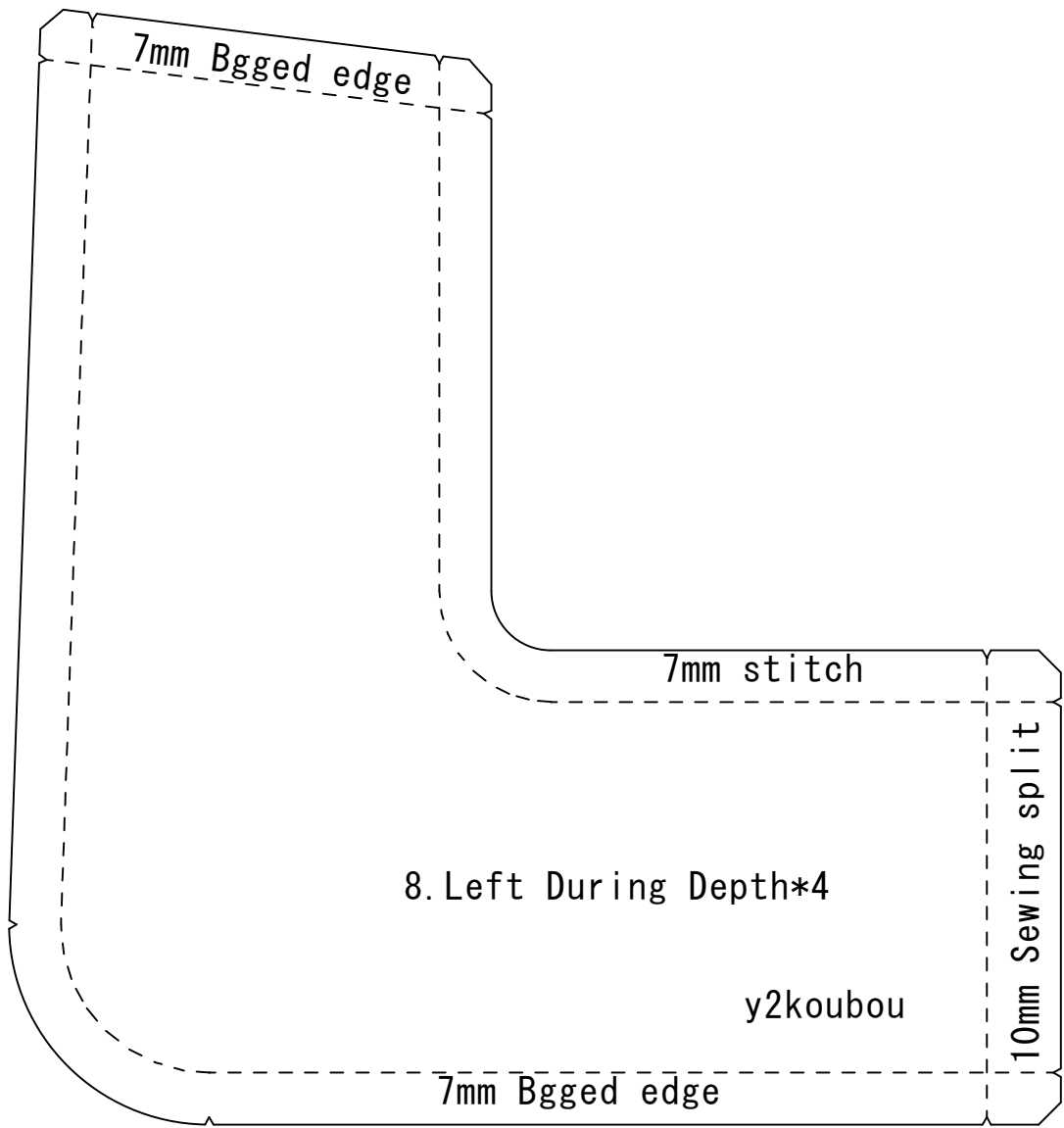
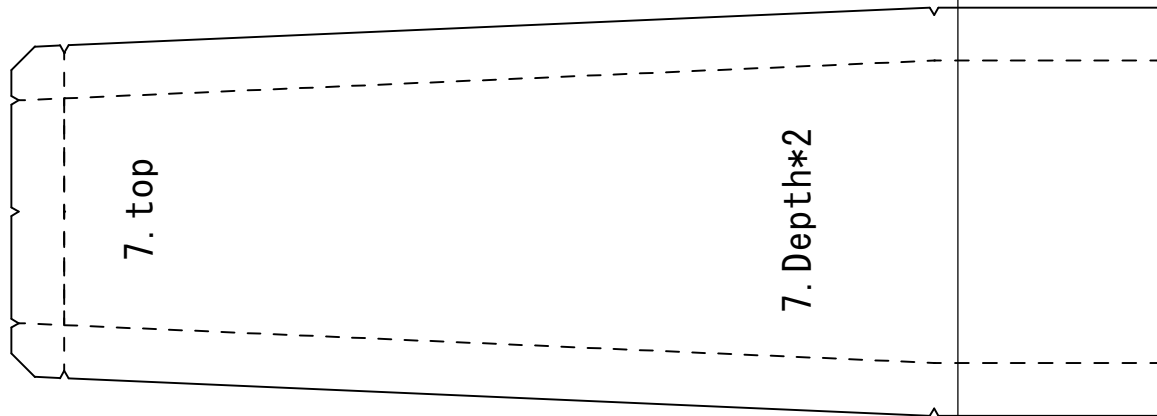
y2koubou

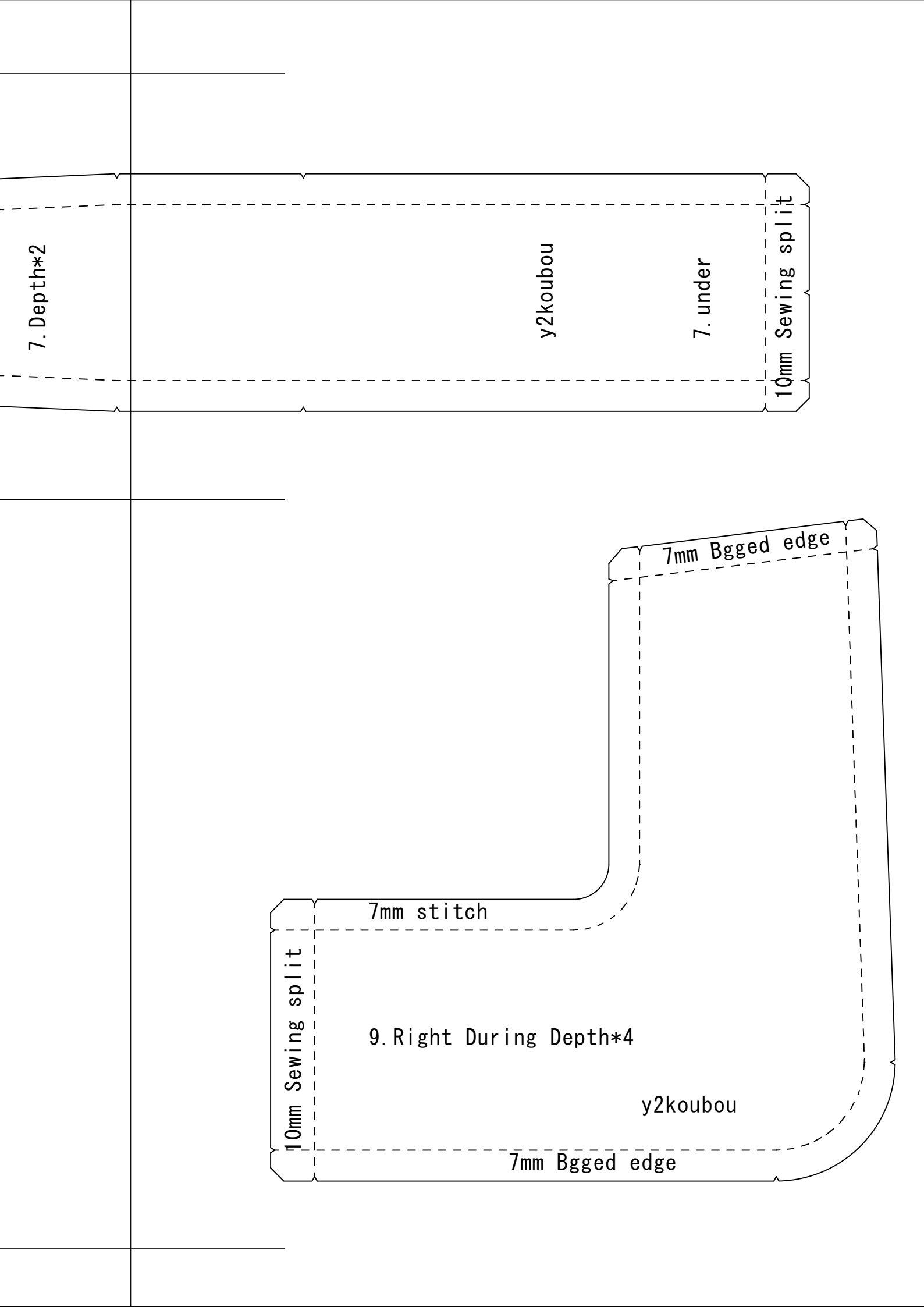
7mm stitch

ch









7. Depth\*2

y2koubou

7. under

10mm Sewing split

7mm Bgged edge

7mm stitch

10mm Sewing split

9. Right During Depth\*4

y2koubou

7mm Bgged edge

8mm Pot on

10. left

10. Lining side pocket\*2

Fold position

7mm Bgged edge

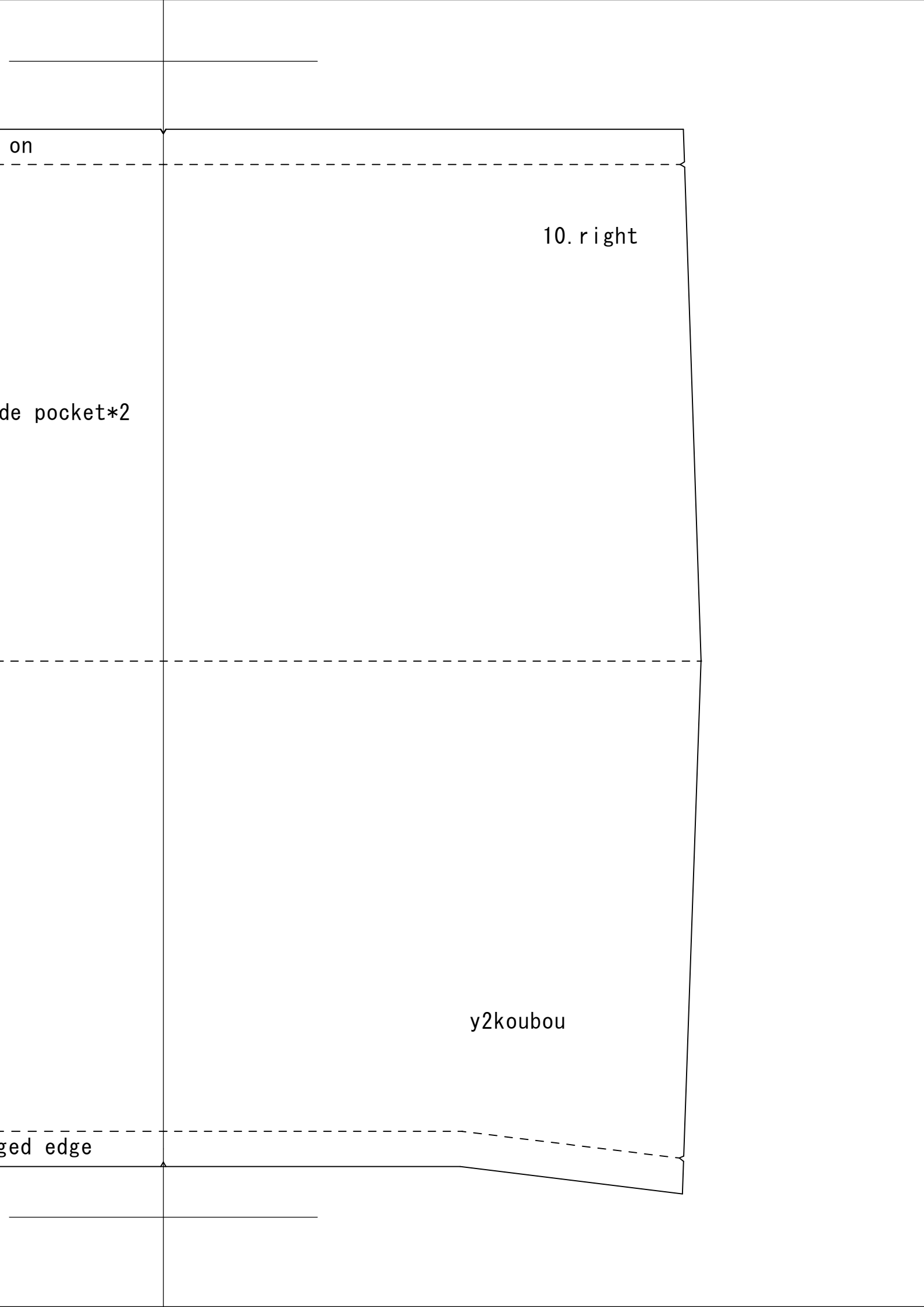
on

10. right

de pocket\*2

y2koubou

ged edge



11. left

11.Lining Front torso zipper pocket\*1

Fold position

7mm Bgged edge

r pocket\*1

11.right

y2koubou

12. left

12. body core\*2

13. left

13. lining Mouth core\*4

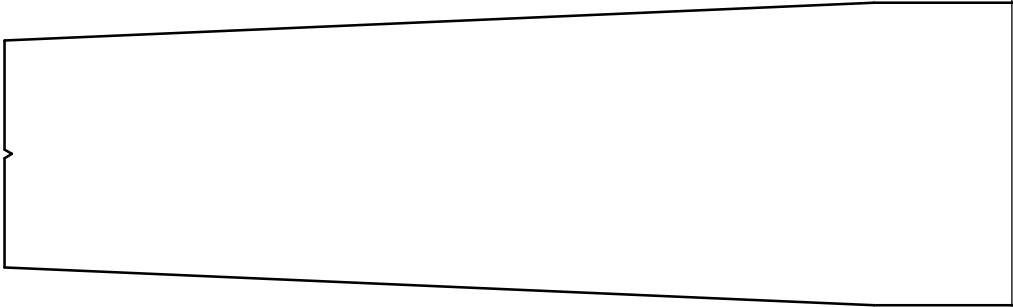
12. right

y2koubou

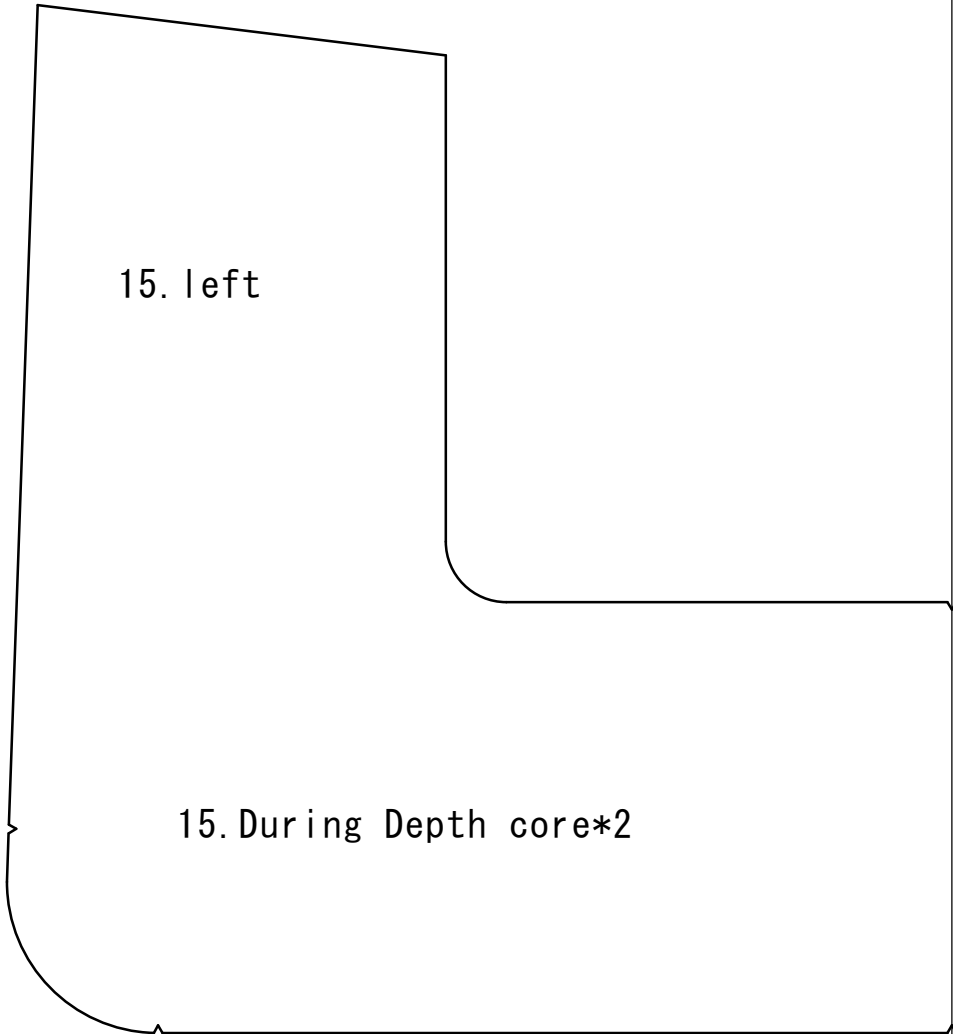
Mouth core\*4

13. right



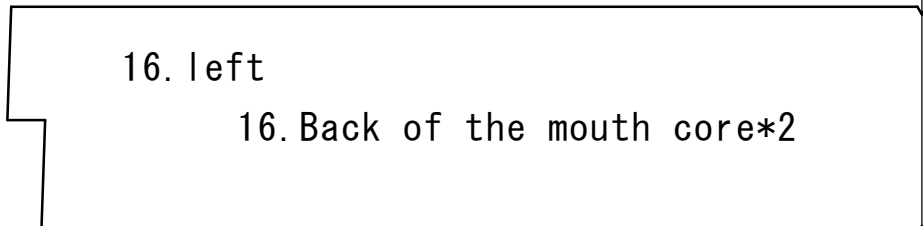


14. Depth core  
\*2



15. left

15. During Depth core\*2



16. left

16. Back of the mouth core\*2

14. Depth core  
\*2

y2koubou

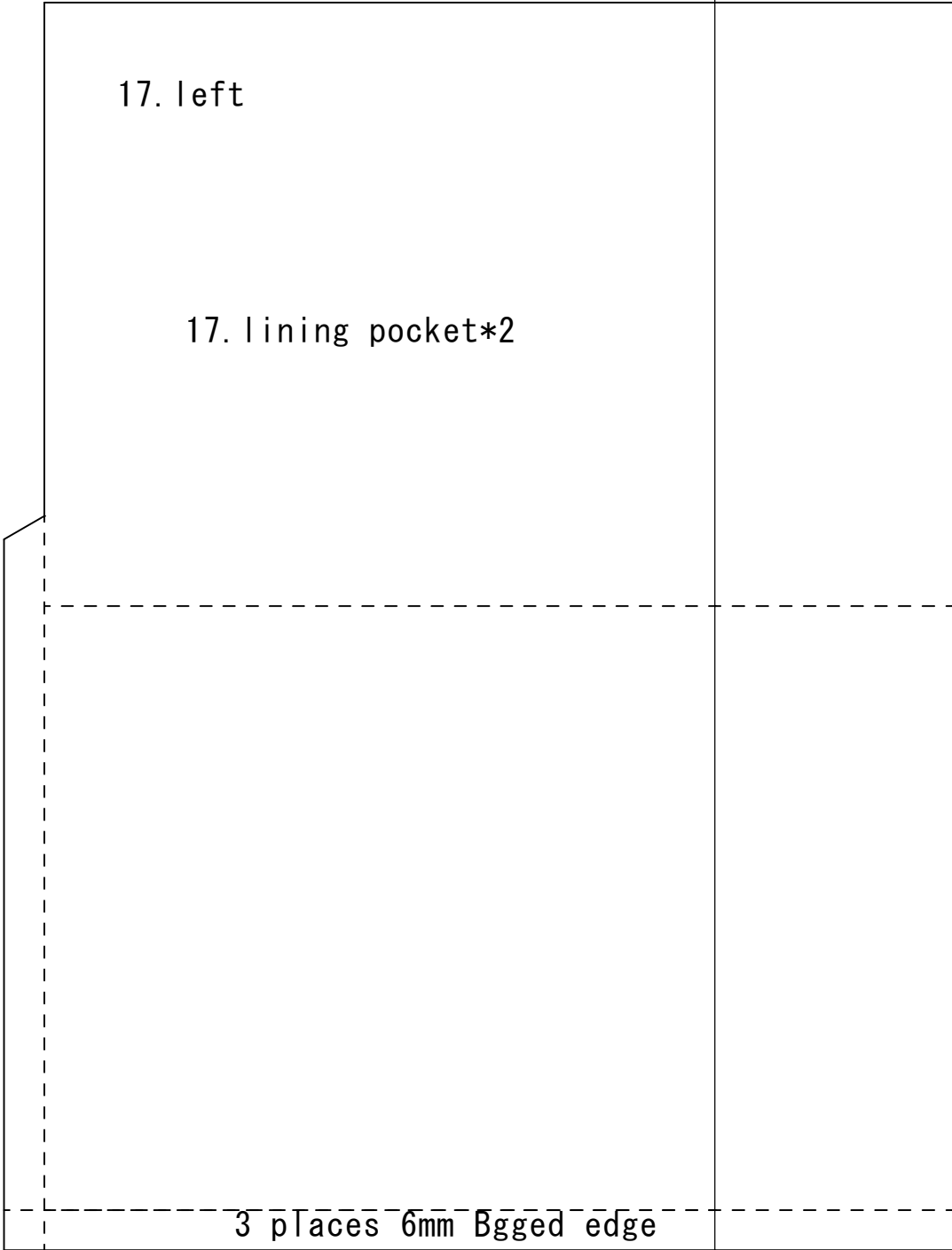
15. right

y2koubou

16. right

y2koubou

core\*2



\*2

7mm Bgged edge

y2koubou

17. right

19. looped belt core y2koubou

7mm Bgged edge

18. looped belt

y2koubou

7mm Bgged edge