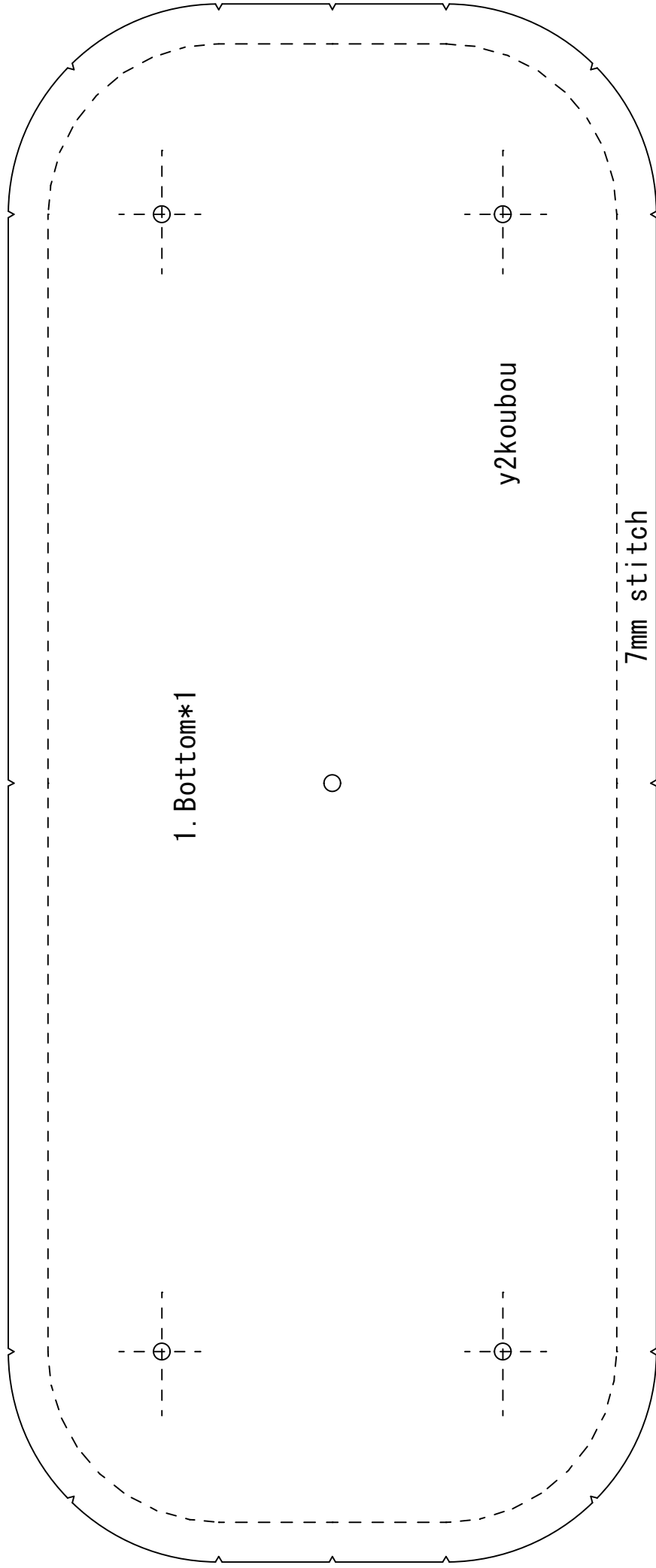
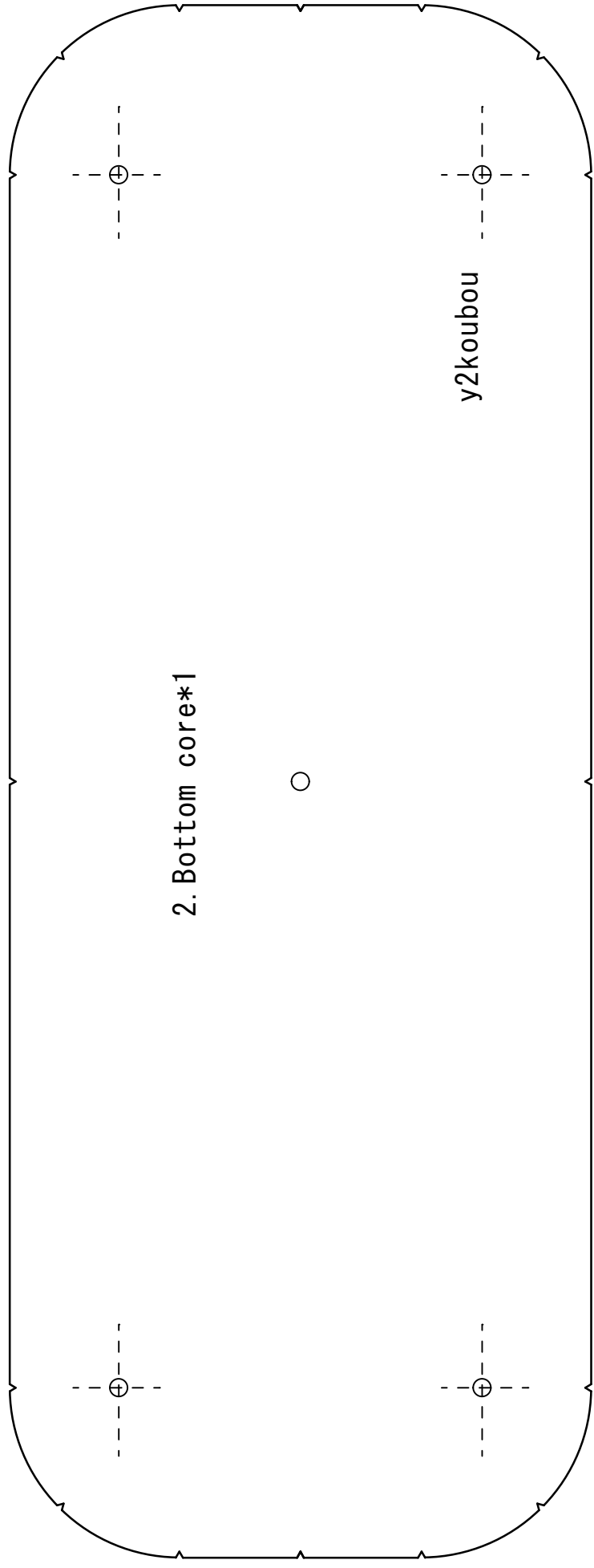


【No28】 Make a cowhide handbag

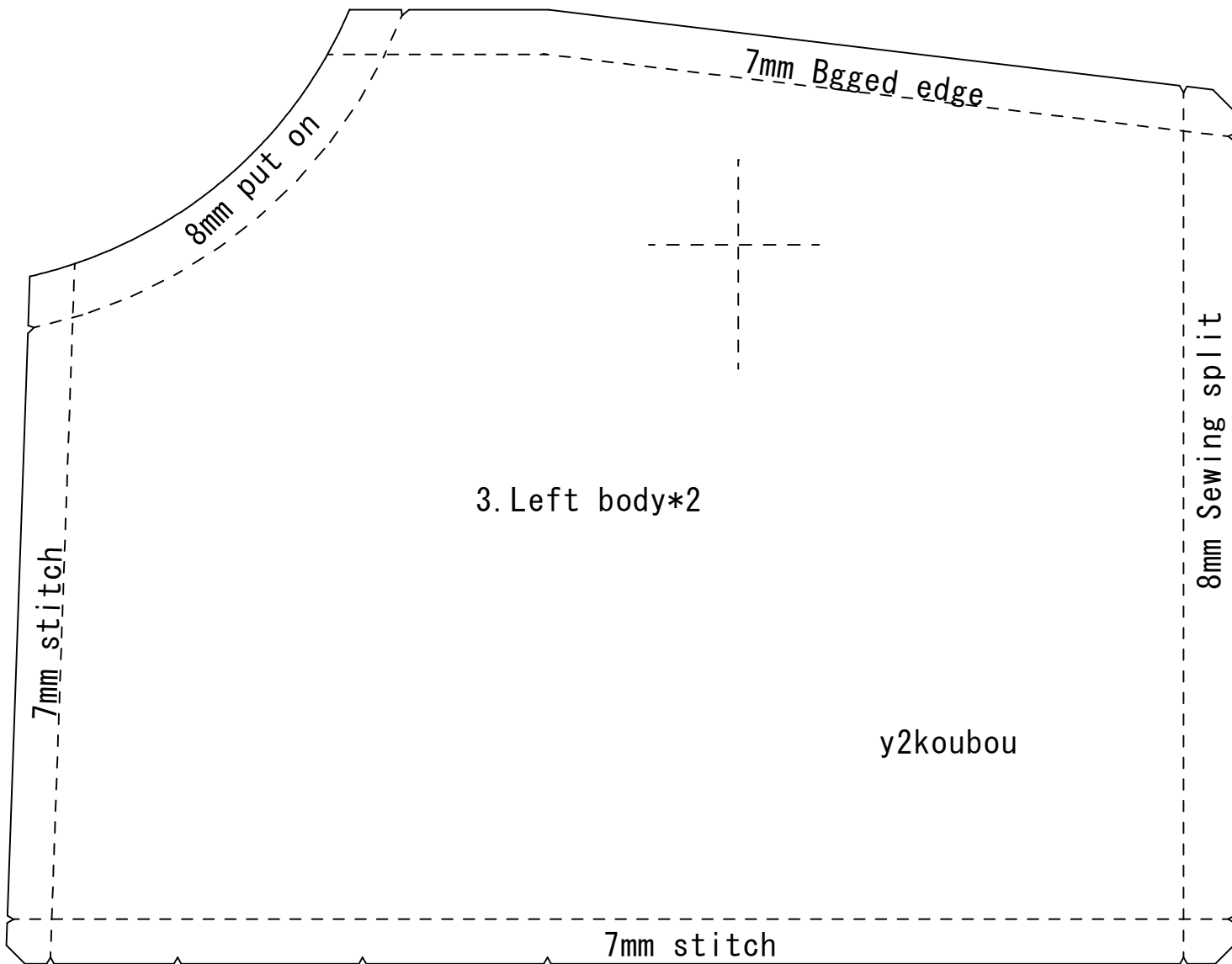
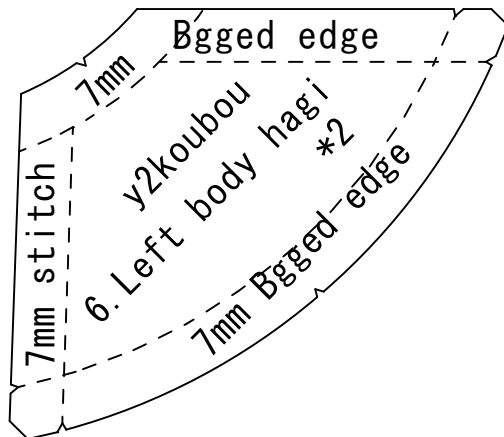
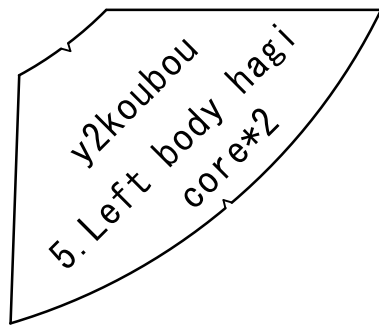
English		日本語
1. Bottom*1		底マチ*1
2. Bottom core*1		底マチ芯*1
3. Left body*2		左胴*2
4. Right body*2		右胴*2
5. Left body hagi core*2		ハギ左芯*2
6. Left body hagi*2		ハギ左*2
7. Right body hagi*2		ハギ右*2
8. Right body hagi core*2		ハギ右芯*2
9. Partition core*4		中仕切り芯*4
10. Partition core*2		中仕切り*2
11. Body core*2		胴芯*2
12. Lining body mouth core*2		裏地胴口芯*2
13. Lining body*2		裏地胴*2
14. Lining Partition*2		裏地中仕切り*2
15. Lining Bottom*1		裏地底マチ*1
16. Zipper pocket*1		ジッパーポケット*1
17. Zipper pocket core*1		ジッパーポケット芯*1
Producer	Y2工房 (wa i tu u ko u bo u)	
Home page	y2koubou.com	
You Tube	Y2工房 -Bag craftsman-	

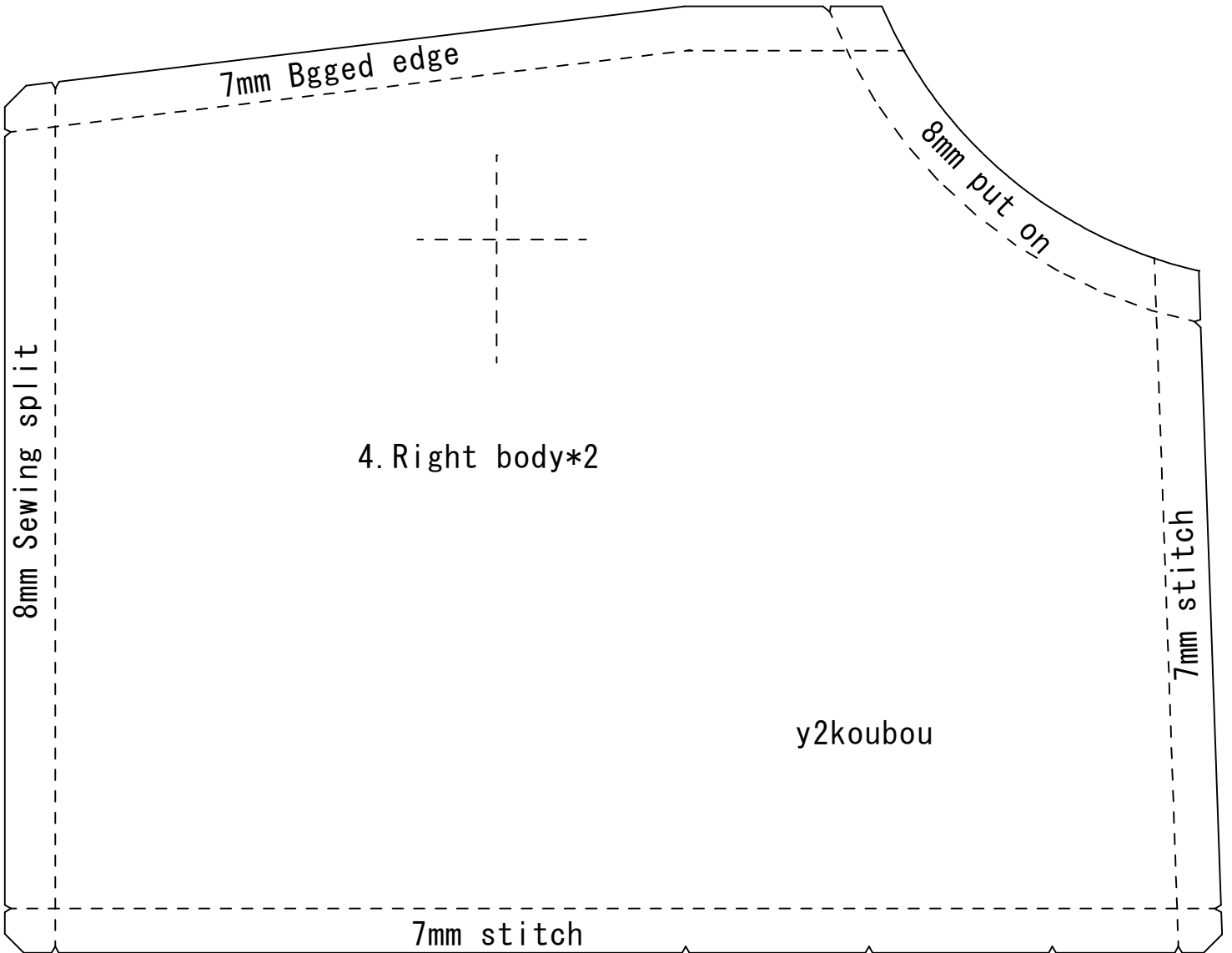
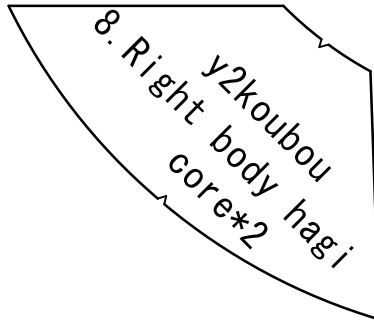
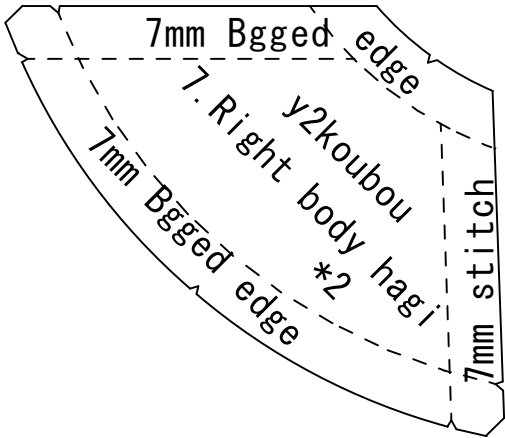


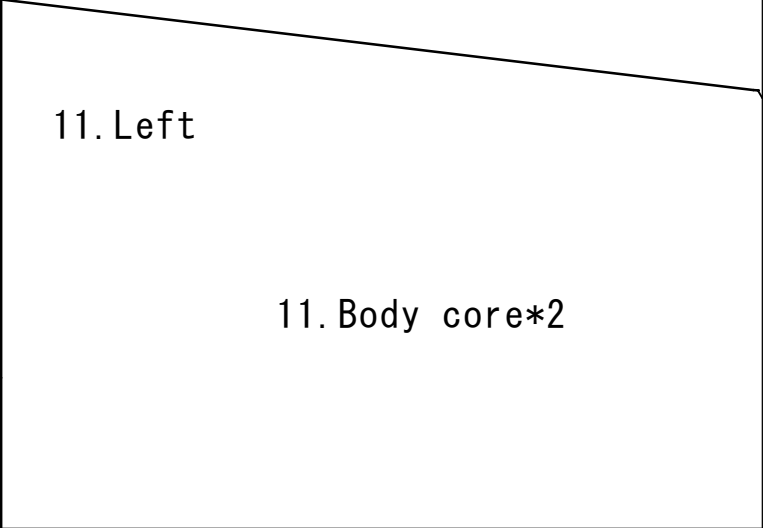
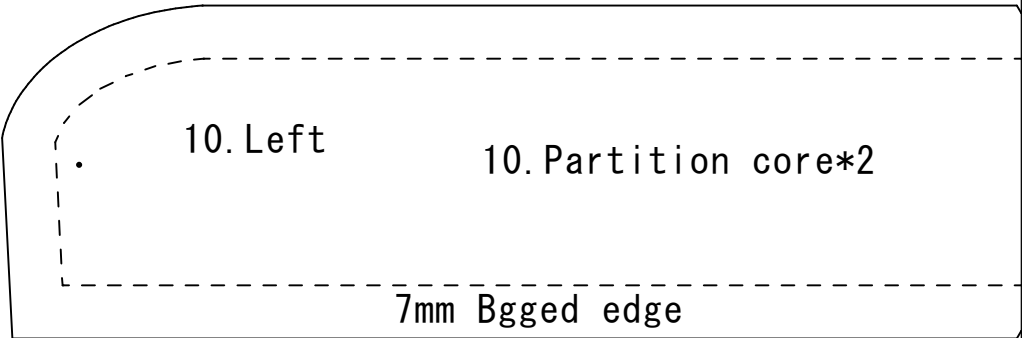


2. Bottom core*1

y2koubou







*4

9. Right

y2koubou

e*2

7mm Bgged edge

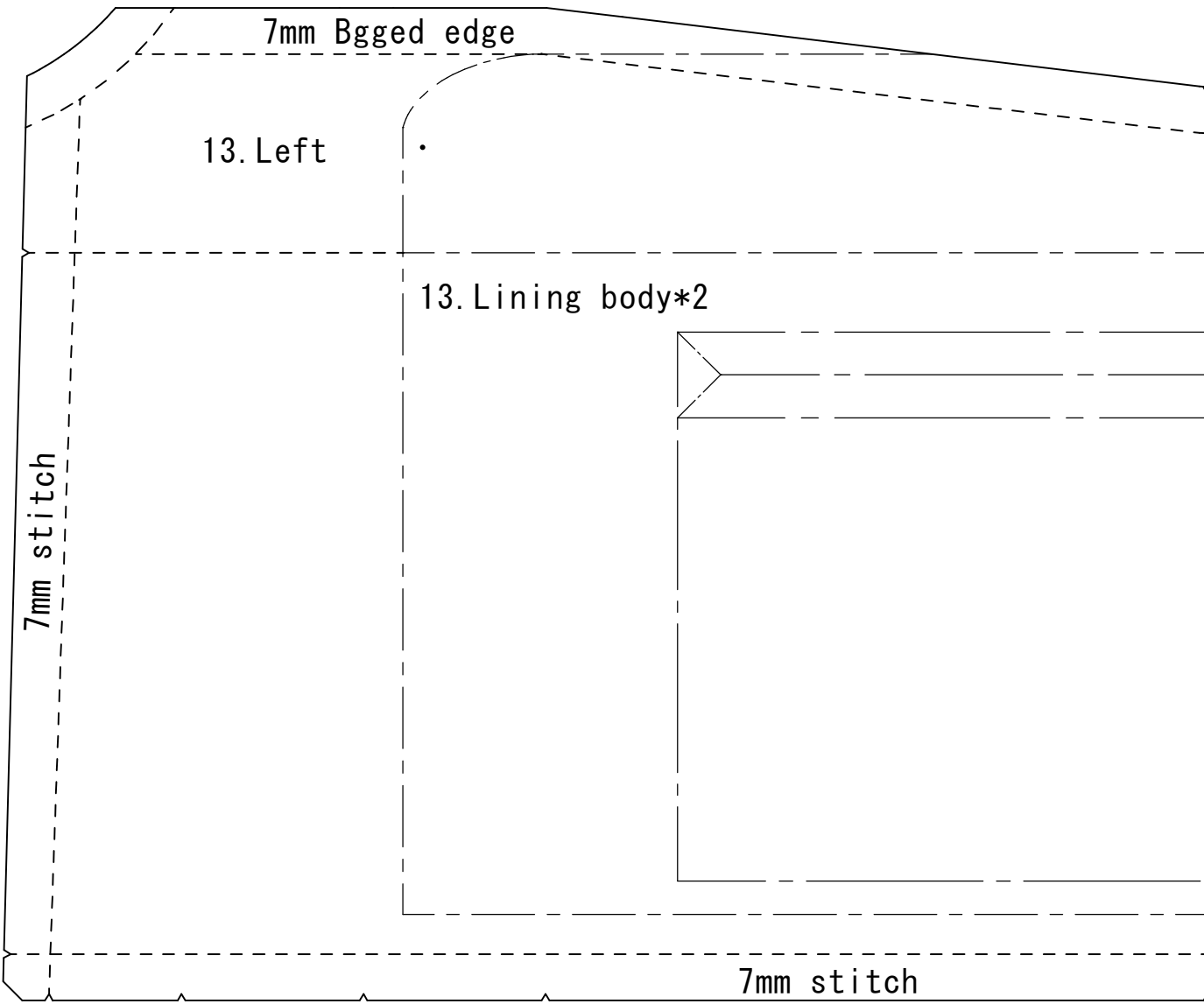
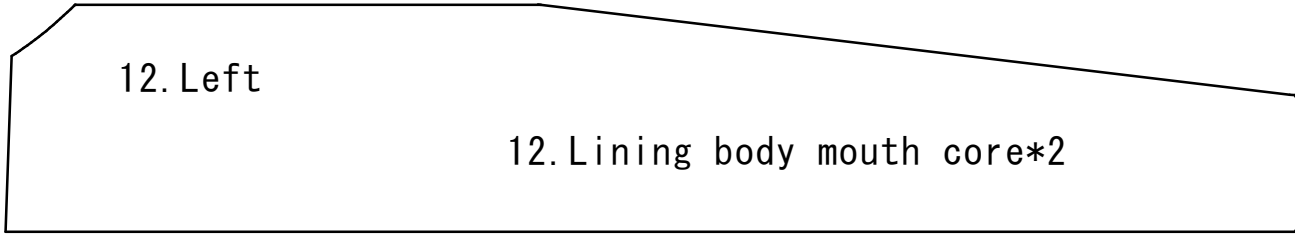
10. Right

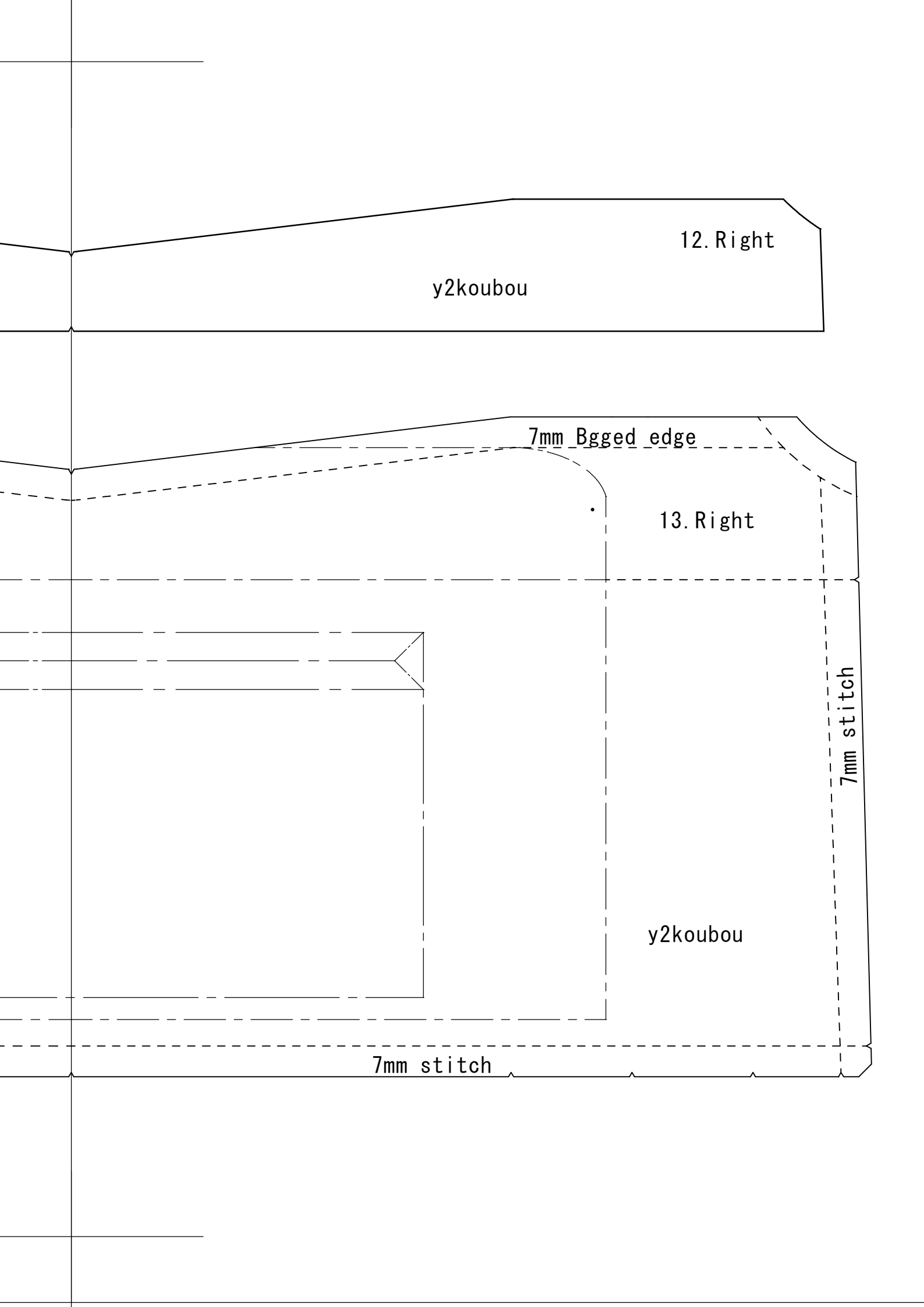
y2koubou

2

11. Right

y2koubou





12. Right

y2koubou

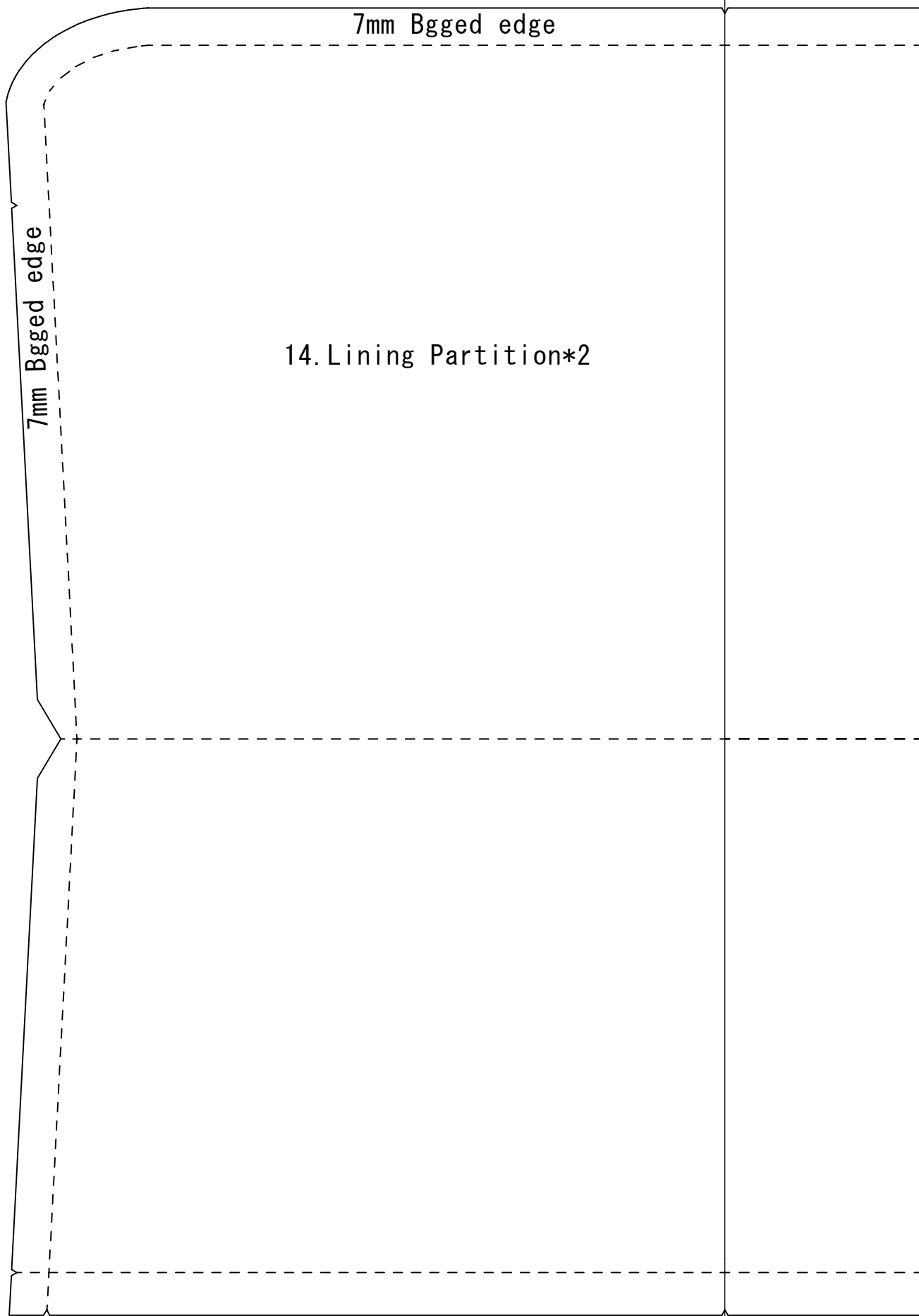
7mm Bgged edge

13. Right

7mm stitch

y2koubou

7mm stitch



7mm Bgged edge

7mm Bgged edge

14. Lining Partition*2

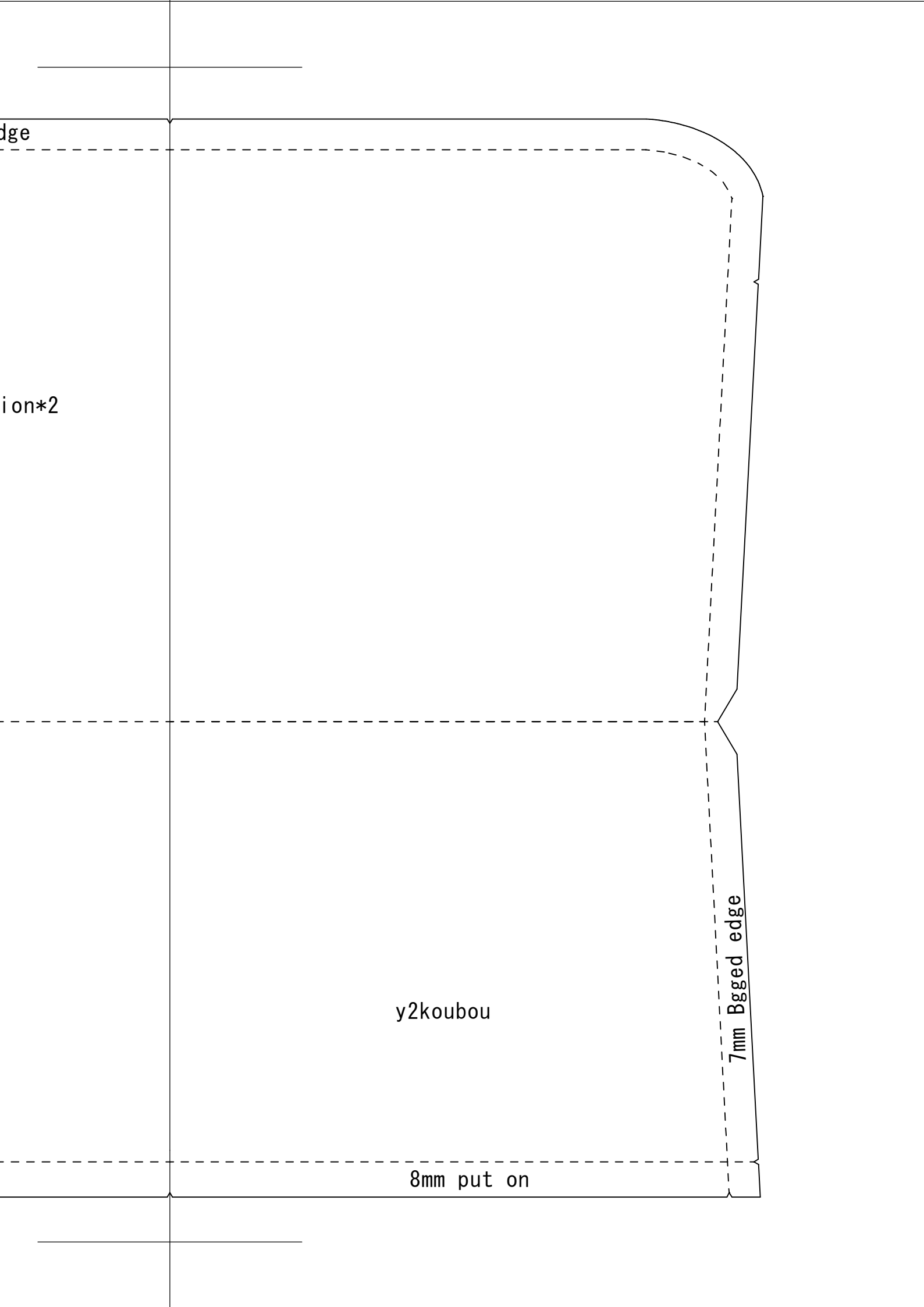
edge

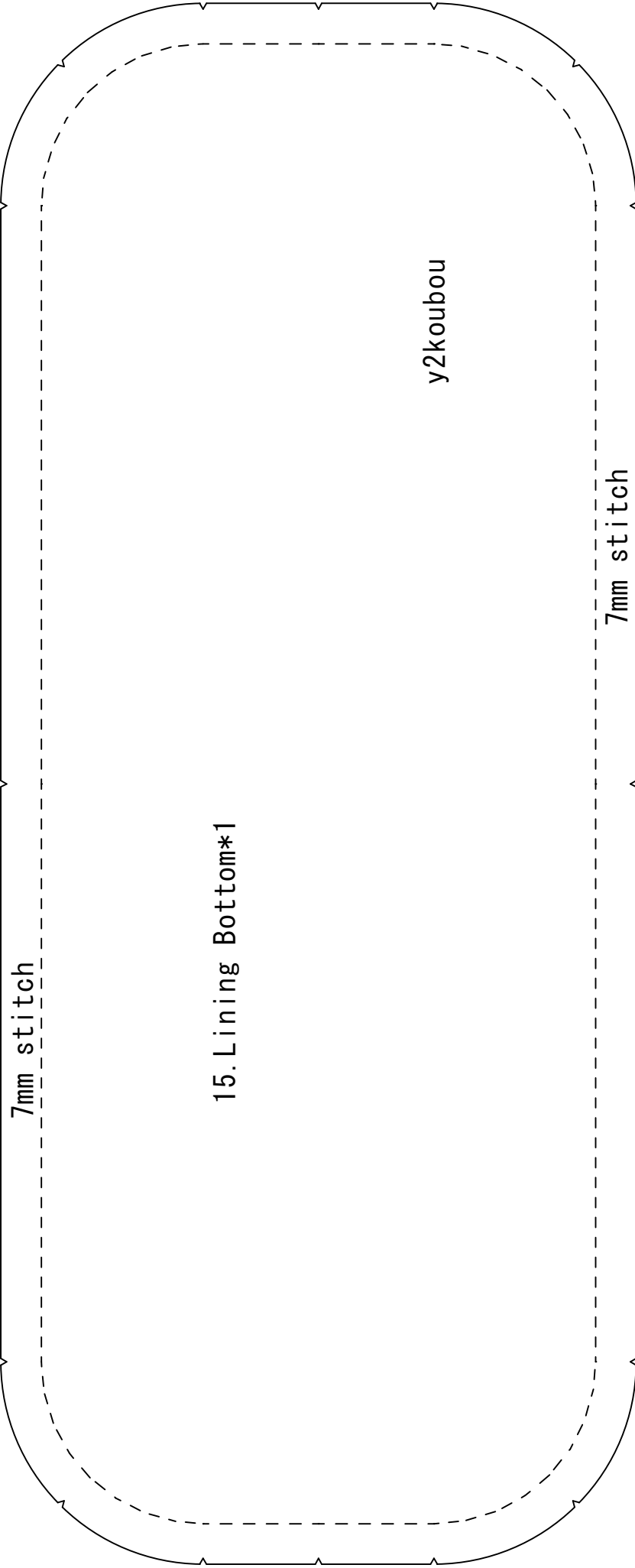
ion*2

y2koubou

8mm put on

7mm Bgged edge





7mm stitch

15. Lining Bottom*1

y2koubou

7mm stitch

17. Zipper pocket core*1



y2koubou

7mm Bgged edge

16. Zipper pocket*1

y2koubou